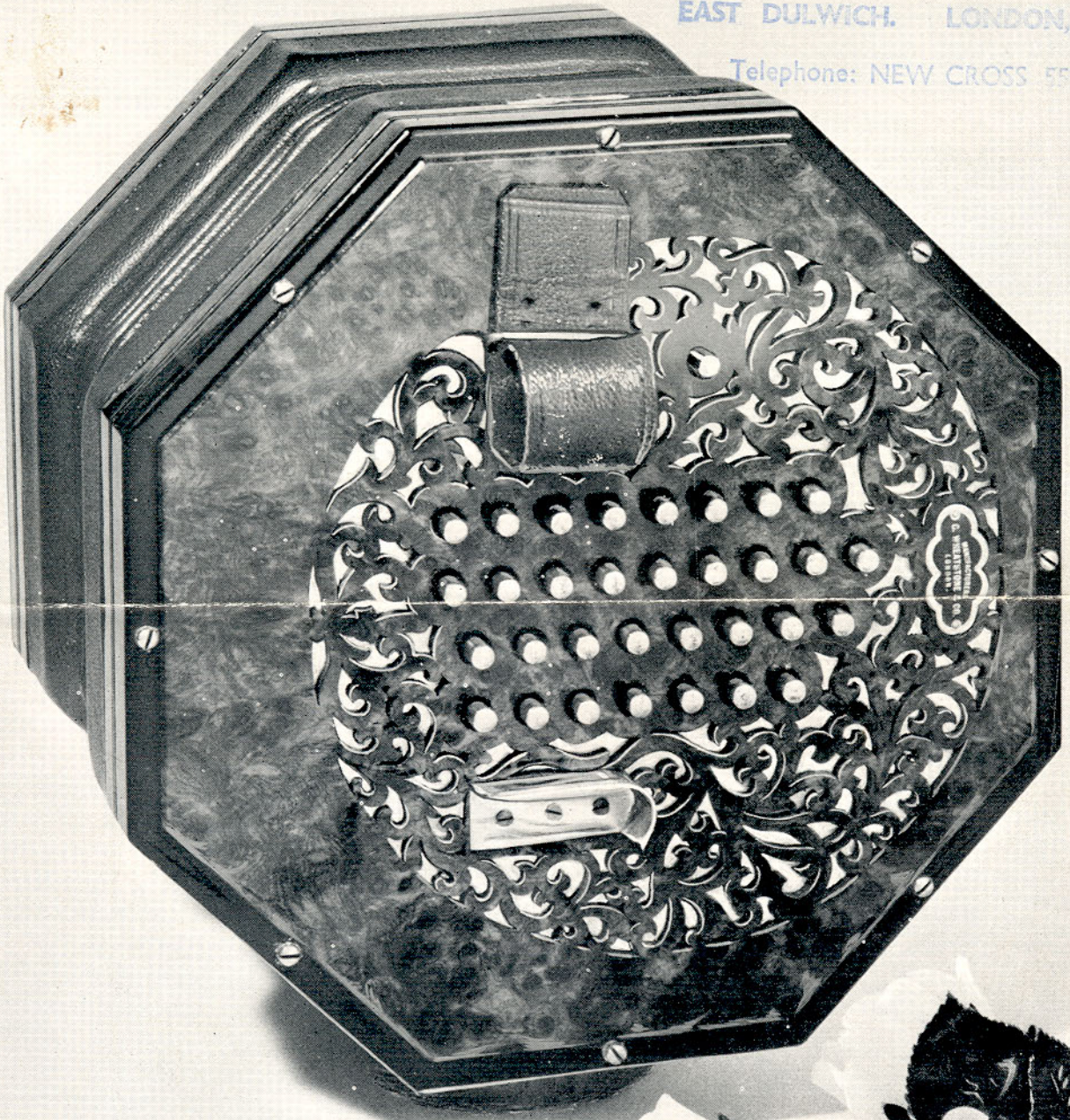


COLERIDGE LOVELL MUSICAL INSTRUMENTS

9, MELBOURNE GROVE,

EAST DULWICH. LONDON, S.E.22.

Telephone: NEW CROSS 5523

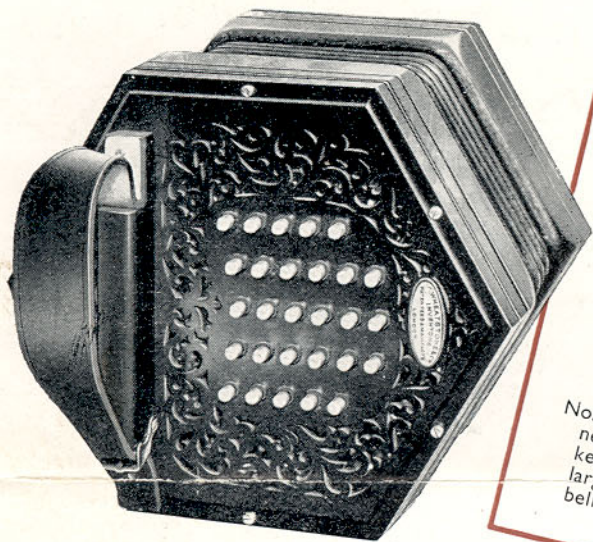


**WHEATSTONE
CONCERTINAS
AND AEOLAS**



COLERIDGE LOVELL MUSICAL INSTRUMENTS
9, MELBOURNE GROVE,
EAST DULWICH, LONDON, S.E.22.

WHEAT

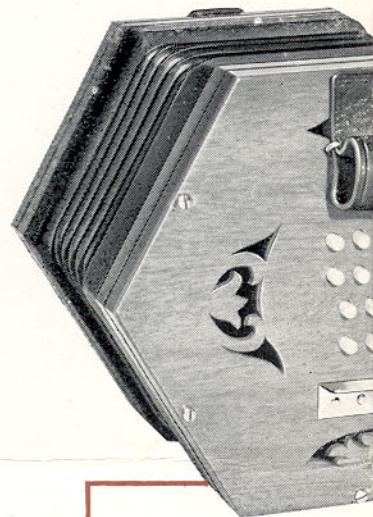


"DUET" MODEL No. 2T

"DUET" MODELS

"Crane" or "Triumph" System

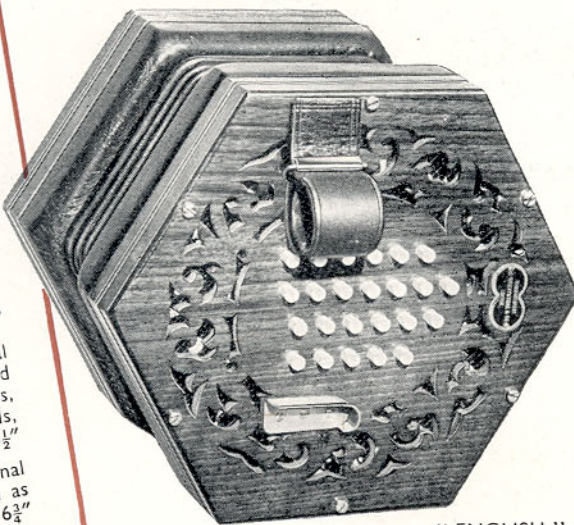
- No. 1T. 48 keys. Mahogany finish, erinoid keys, steel reeds, six-fold bellows, in leatherette case. Size $6\frac{5}{8}$ "
- No. 2T. 48 keys. Ebony finish, nickel-silver capped keys, steel reeds, six-fold bellows, in leatherette case. Size $6\frac{5}{8}$ "
- No. 3T. 55 keys. Specification as above. Size 7"
- No. 4T. 55 keys, "AEOLA" new octagonal model, Ebony finish, raised keyboard, nickel-silver capped keys, large scale steel reeds, seven-fold bellows, in leather case. Size $7\frac{1}{4}$ "
- No. 5T. Baritone Duet "AEOLA" new octagonal model, 55 keys, raised keyboard, nickel-silver capped keys, large scale steel reeds, eight-fold bellows, in leather case. Size 8"



"ENGLISH" MODEL

TREBLES

- No. 0E. 36 keys, Mahogany finish, erinoid keys, five-fold bellows, steel reeds, in carrying case. Size $6\frac{1}{2}$ "
- No. 1E. 48 keys, Walnut finish, erinoid keys, five-fold bellows, steel reeds, in leatherette case. Size $6\frac{1}{2}$ "
- No. 2E. 48 keys, Rosewood finish, nickel-silver capped keys, five-fold bellows, steel reeds, in leatherette case. Size $6\frac{1}{2}$ "
- No. 3E. 48 keys, Ebony finish, nickel-silver capped keys, six-fold bellows, steel reeds, in leatherette case. Size $6\frac{1}{4}$ "
- No. 4E. "AEOLA" new octagonal model. 48 keys, Ebony finish, raised keyboard, nickel-silver capped keys, six-fold bellows, large scale steel reeds, in leather case. Size $6\frac{1}{2}$ "
- No. 5E. "AEOLA" new octagonal model, 56 keys, same specification as No. 4E. Size $6\frac{3}{4}$ "



"ENGLISH" MODEL No. 1E

The Mod
"ENGLI
CONCER

36 keys, $2\frac{1}{2}$ octaves, give
to meet the requirem
Dance Musician, Stud

ALL SIZES SHOWN REFER
OF INSTRUMENT

CONCEI
AND AI

STONE

"DUET" MODELS

No. 1D. 46 keys, Rosewood finish, nickel-silver capped keys, six-fold bellows, steel reeds, in leatherette case. Size 6 $\frac{1}{4}$ "

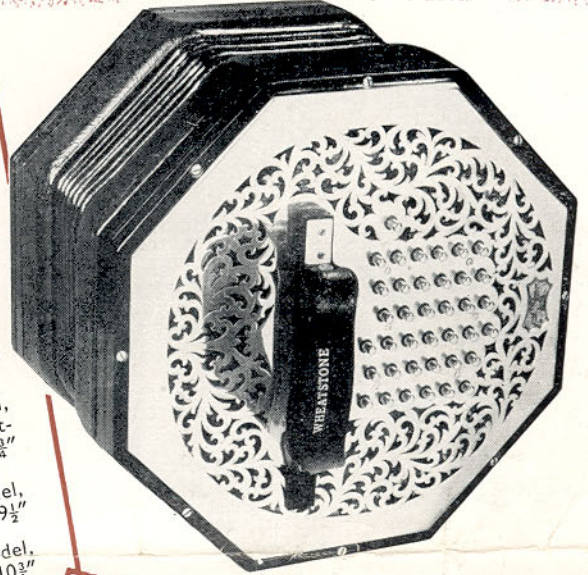
No. 2D. 58 keys, specification as above. Rosewood or ebony finish. Size 7"

No. 3D. 58 keys, "AEOLA" octagonal model, Ebony finish, raised keyboard, nickel-silver capped keys, large scale steel reeds, seven-fold bellows, in leather case. Size 7 $\frac{1}{2}$ "

No. 4D. 68 keys, "AEOLA" model, specification as above, but with eight-fold bellows. Size 8 $\frac{3}{4}$ "

No. 5D. 72 keys, "AEOLA" model, specification as above. Size 9 $\frac{1}{2}$ "

No. 6D. 80 keys, "AEOLA" model, specification as above. Size 10 $\frac{3}{4}$ "

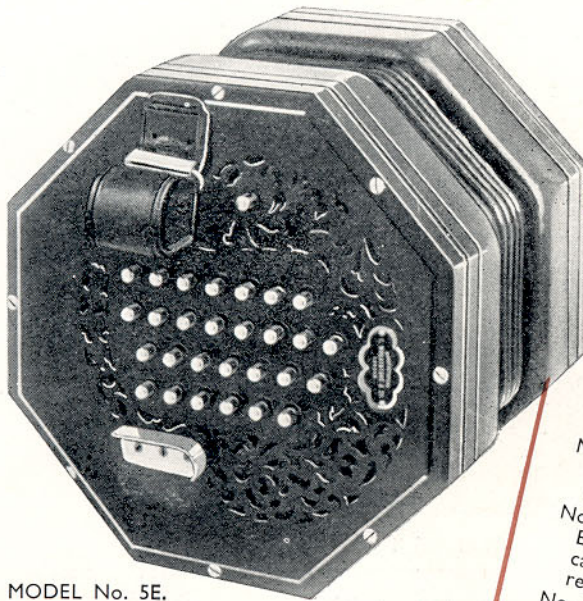


"DUET" MODEL No. 5D
(with metal ends)

OE
SH"
TINA

ample range
of the Folk
nt, etc.

TO THE DIAMETER
FRET ENDS.



"ENGLISH" MODEL No. 5E.

"ENGLISH" MODEL TENOR-TREBLES

No. 6E. 48 keys, Ebony finish, nickel-silver capped keys, six-fold bellows, steel reeds, in leatherette case. Size 6 $\frac{3}{8}$ "

No. 7E. 56 keys, same specification as above. Size 7"

No. 8E. 48 keys, "AEOLA" new octagonal model, Ebony finish, raised keyboards, nickel-silver capped keys, six-fold bellows, large scale steel reeds, in leather case. Size 6 $\frac{3}{8}$ "

No. 9E. 56 keys, "AEOLA" model, specification as No. 8E. Size 7 $\frac{1}{4}$ "

No. 10E. 64 keys, "AEOLA" model, specification as No. 8E. Size 7 $\frac{1}{2}$ "

BARITONE-TREBLES

No. 11E. 56 keys, "AEOLA" new octagonal model, Ebony finish, nickel-silver capped keys, seven-fold bellows, large scale steel reeds, in leather case. Size 8"

No. 12E. 64 keys, "AEOLA," specification as 11E, but eight-fold bellows. Size 8 $\frac{3}{4}$ "

BARITONES

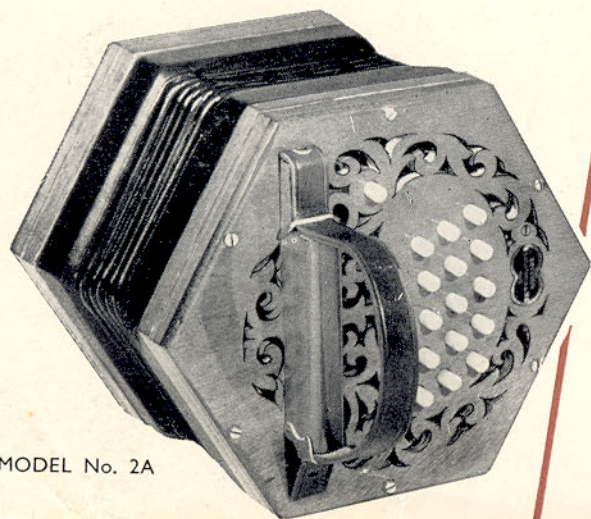
No. 13E. 48 keys, Rosewood finish, nickel-silver capped keys, six-fold bellows, steel reeds, in leatherette case. Size 7 $\frac{1}{2}$ "

No. 14E. 48 keys, "AEOLA" octagonal model, Ebony finish, raised keyboard, nickel-silver capped keys, seven-fold bellows, large scale steel reeds, in leather case. Size 7 $\frac{1}{2}$ "

No. 15E. 56 keys, "AEOLA," same specification as 14E. Size 8"

RTINAS
EOLAS

WHEATSTONE



MODEL No. 2A

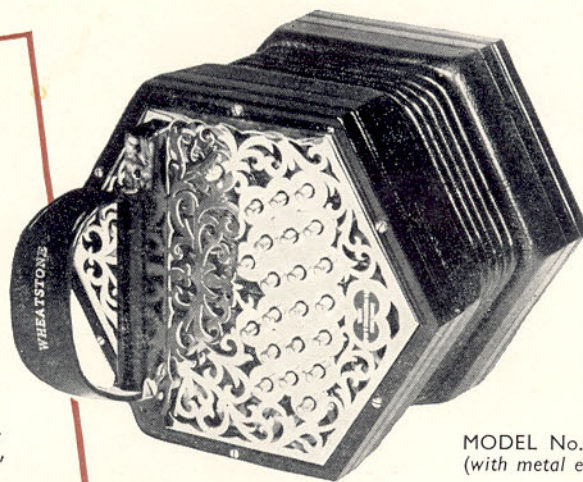
ANGLO-CHROMATIC MODELS

- No. 1A. POPULAR MODEL, 20 keys, Mahogany finish, non-corrosive erinoid keys, five-fold bellows, steel reeds, including case. Size 6 $\frac{1}{4}$ "
- No. 2A. 30 keys, specification as above. Size 6 $\frac{1}{4}$ "
- No. 3A. BEST QUALITY, 20 keys, Rosewood or Ebony finish, nickel-silver capped keys, six-fold bellows, steel reeds, in leatherette case. Size 6 $\frac{1}{4}$ "

All models can be supplied with metal ends—chrome plated on nickel silver—at extra cost.

ANGLO-CHROMATIC MODELS

- No. 4A. 30 keys, specification as Model 3A. Size 6 $\frac{1}{4}$ "
- No. 5A. 36 keys, specification as Model 3A. Size 6 $\frac{1}{4}$ "
- No. 6A. 40 keys, specification as Model 3A. Size 6 $\frac{1}{4}$ "
- No. 7A. PROFESSIONAL MODEL, finest quality new octagonal "AEOLA" model, Ebony finish, nickel-silver capped keys, eight-fold bellows, steel reeds, in leather case. Size 6 $\frac{3}{4}$ "



MODEL No. 6A
(with metal ends)

C. WHEATSTONE & COMPANY LTD.

15 WEST STREET, LONDON, W.C.2, ENGLAND.

Telephone : Kensington 5037.

Telegrams : CLEF, WESTCENT, LONDON.

9, MELBOURNE GROVE. EAST DULWICH.

NEW CROSS. 5523

LONDON. S. E. 22.

CASH PRICE AND "EASY HIRE PURCHASE TERMS" CONCERTINAS.

		CASH PRICE.	DEPOSIT.	12 Monthly payments.	18 Monthly payments.
		£. S. D.	£. S. D.	£. S. D.	£. S. D.
DUET. "CRANE" or "TRIUMPH" SYSTEM.					
MODEL.	1T.	36.10. 0.	3.10. 0.	3. 4. 1.	- . - . -
	2T.	55. 0. 0.	5.10. 0.	4.15. 9.	3. 6. 7.
	4T	85.10. 0.	8.10. 0.	7. 8. 5.	5. 3. 3.
	5T	95.15. 0.	10.15. 0.	- . - . -	5.13.11.

"ENGLISH" MODELS TREBLE.

	0E.	26.10. 0.	2.10. 0.	2. 6.10.	- . - . -
	1E	35. 5. 0.	3.15. 0.	3. 1. 3.	- . - . -
	2E	39.15. 0.	4.15. 0.	3. 7.11.	- . - . -
	3E	53. 0. 0.	5.10. 0.	4.11.11.	3. 3.10.
AEOLA	4E	70.10. 0.	7.10. 0.	6. 1. 7.	4. 4.10.
"	5E	77. 0. 0.	8. 0. 0.	6.13. 6.	4.12. 7.

"DUET" MODELS.

	1D	39.15. 0.	4. 0. 0.	3. 9. 5.	- . - . -
	2D	66. 0. 0.	7. 0. 0.	5.13.11.	3.19. 3.
	3D	85.10. 0.	8.10. 0.	7. 8. 5.	5. 3. 3.
	4D	105.15. 0.	10.15. 0.)	over 12, 18 or 24 Months.	
	5D	114.10. 0.	11.10. 0.)		
	6D	118. 5. 0.	12. 0. 0.)		

"ENGLISH" MODELS.

	6E	55. 0. 0.	5.10. 0.	4.15. 9.	3. 6. 7.
	7E	66. 0. 0.	7. 0. 0.	5.13.11.	3.19. 3.
"	8E	77. 0. 0.	8. 0. 0.	6.13. 4.	4.12. 7.
"	9E	85.10. 0.	8.10. 0.	7. 8. 5.	5. 3. 3.
"	10E	92.10. 0.	10. 0. 0.	12, 18 or 24 months.	

"BARITONE" TREBLE.

"	11E	95.15. 0.	10. 0. 0.)	12, 18 or 24 months.
"	12E	105.15. 0.	10.15. 0.)	

BARITONES.

"	13E	51. 7. 6.	5. 7. 6.	4. 9. 0.	- . - . -
"	14E	77. 0. 0.	8. 0. 0.	6.13. 4.	4.12. 7.
"	15E	95.15. 0.	10. 0. 0.	12, 18 or 24 months.	

"ANGLO CHROMATIC"

	1A	21. 0. 0.	2. 5. 0.	1.16.10.	- . - . -
	2A	26.10. 0.	2.10. 0.	2. 6.10.	- . - . -
	3A	26.10. 0.	2.10. 0.	2. 6.10.	- . - . -
	4A	36. 0. 0.	3.15. 0.	3. 2. 8.	- . - . -
	5A	42.15. 0.	4.15. 0.	3.13. 8.	- . - . -
	6A	49. 0. 0.	5. 0. 0.	4. 5. 2.	2.19. 3.
	7A	71.15. 0.	7.15. 0.	6. 3. 6.	4. 5.11.

LISTS OF PIANO-ACCORDIONS, BURTON ACCORDIONS etc. on request

DEAL WITH "LOVELL" BRITAIN'S LEADING MAIL ORDER HOUSE.